



**13 Furlands**  
Portland, DT5 2LH

 3  1  1  C

**Asking price**  
**£280,000 Freehold**





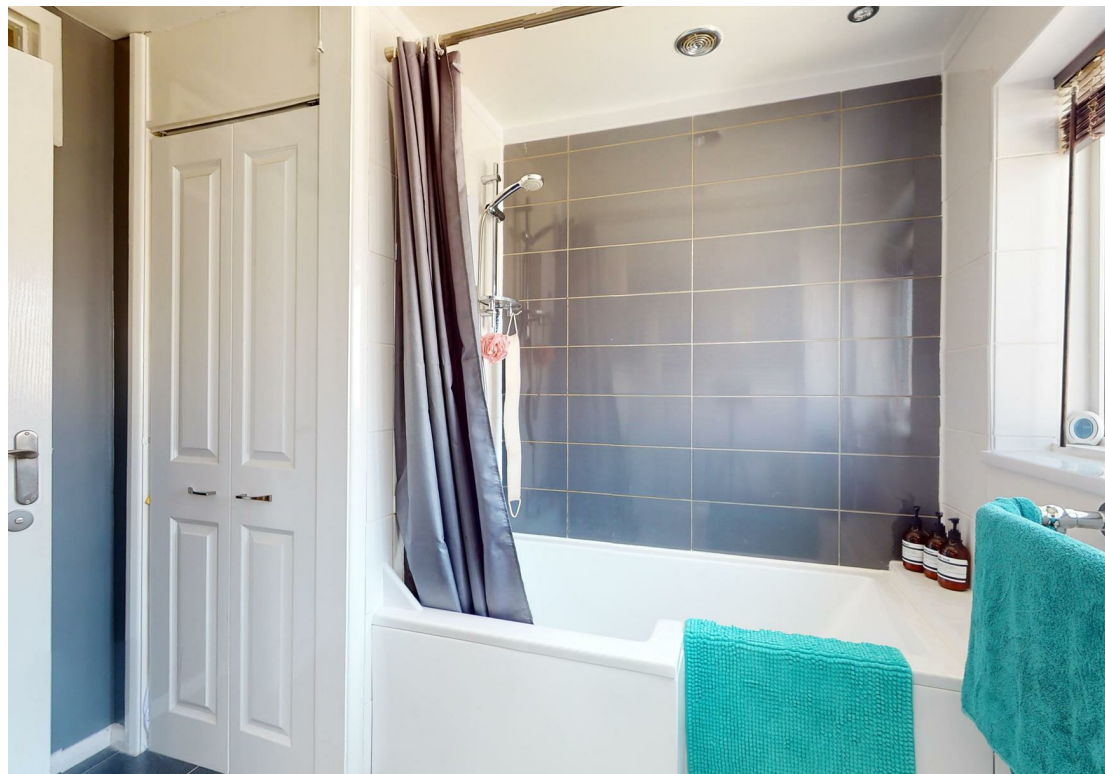
# Furlands

Portland, DT5 2LH

- Three Bedroom Family Home
- Spacious South Facing Rear Garden
- Two Reception Rooms
- Parking for Several Cars
- Modern Kitchen
- Well Proportioned Accommodation
- Modern Bathroom
- Sea and Countryside Views
- Short Stroll to Primary School
- Coastal Walks Nearby







A THREE bedroom, TWO RECEPTION ROOM end of terrace house situated in Furlands with DRIVEWAY & OPEN ASPECT VIEWS OVER THE SURROUNDING FIELDS and SEA IN THE DISTANCE.

The accommodation comprises an entrance porch, opening into the living room with a large southerly window overlooking the front garden. The living room opens into the hallway with a useful storage cupboard, stairs to the first floor and access into the second reception/ dining room and into the kitchen.



The kitchen comprises a range of fitted kitchen units, integrated eye level oven and ample space for further free standing appliances and a door out to the rear.

Ascending to the first floor are three bedrooms, a modern fitted bathroom with low-level WC. Bedrooms one and two both overlook the front, whilst enjoying open aspect views over the fields towards the sea. The third bedroom is a reasonable size and overlooks the rear.

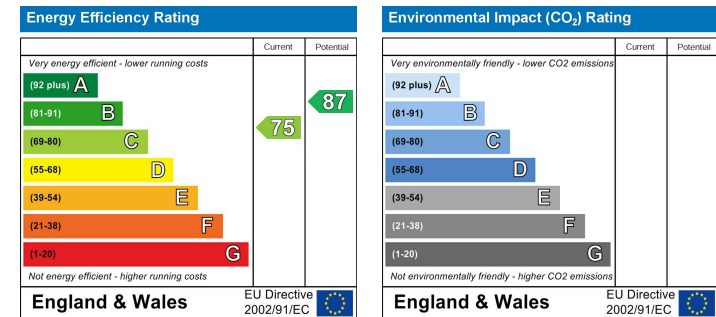
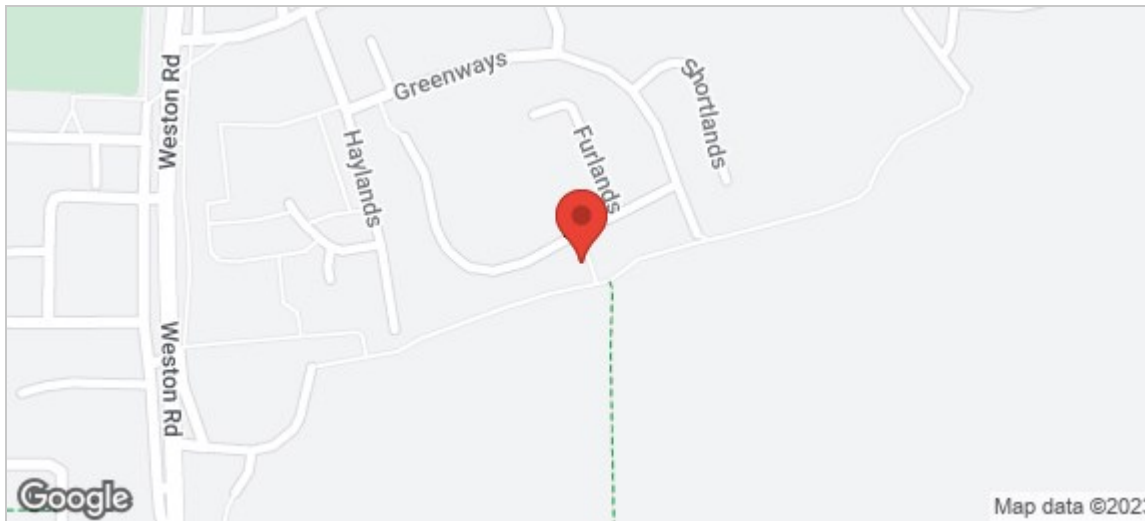
Outside is a front and rear garden. To the rear of the property is a driveway providing off road parking for multiple vehicles and ample space for a storage shed. To the front is a predominantly lawned garden that enclosed. Countryside views are visible from this garden and it has a Southerly facing aspect.



The property has been well maintained by the current owners and is situated within Furlands, a popular residential road a short distance from Easton Square. The square offers a range of shops and eateries and has a pleasant community feel. Portland is an Island situated at the foot of Dorset and is well known for its tremendous ocean views and close proximity to the Jurassic Coast.



- Kitchen**  
6'6" x 8'10" (2 x 2.7)
- Dinning Room**  
6'6" x 16'8" ( 2 x 5.10)
- Living Room**  
10'5" x 17'4" (3.2 x 5.3)
- Bedroom One**  
7'6" x 16'4" (2.3 x 5)
- Bedroom Two**  
9'6" x 10'9" (2.9 x 3.3)
- Bedroom Three**  
7'6" x 13'1" (2.3 x 4 )



These particulars, whilst believed to be accurate are set out as a general outline only for guidance and do not constitute any part of an offer or contract. Intending purchasers should not rely on them as statements of representation of fact, but must satisfy themselves by inspection or otherwise as to their accuracy. No person in this firms employment has the authority to make or give any representation or warranty in respect of the property.